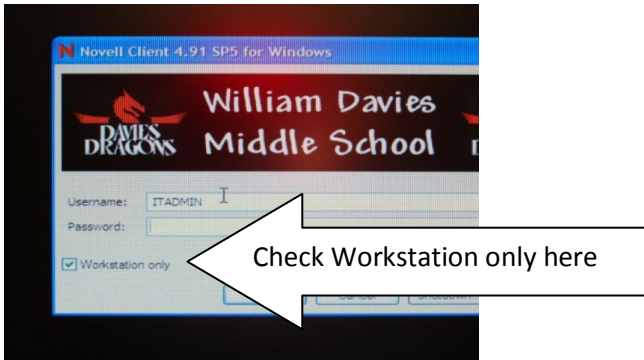
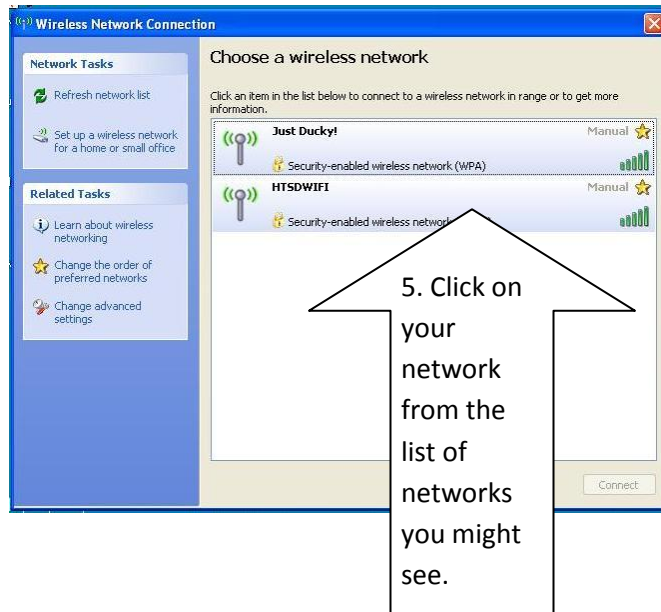
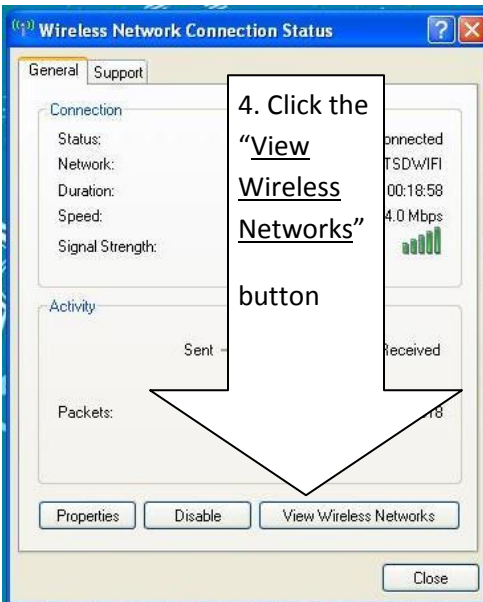
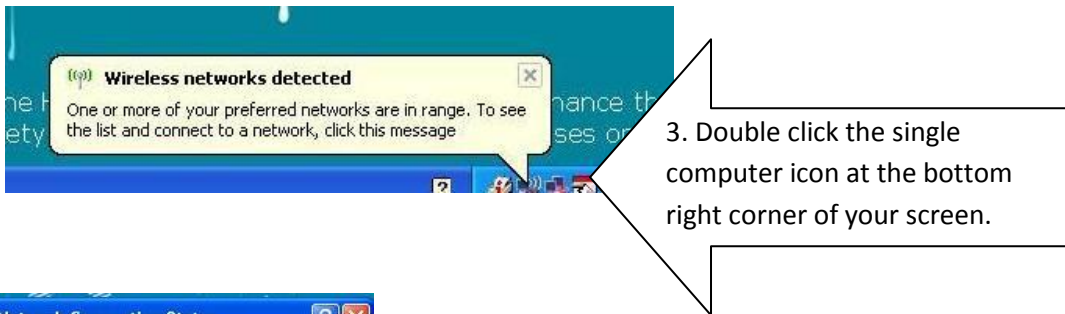


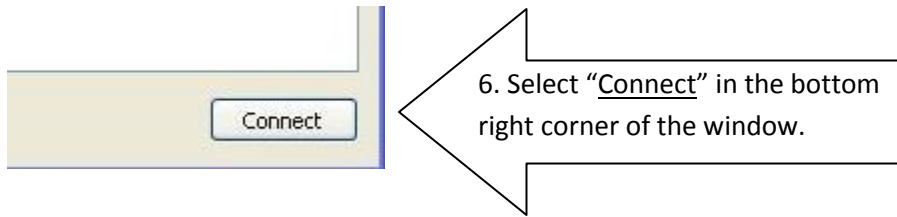
To Log On A Student Netbook at Home:

1. Check off the WORKSTATION ONLY box which is located on the bottom left corner of the Novell Window.

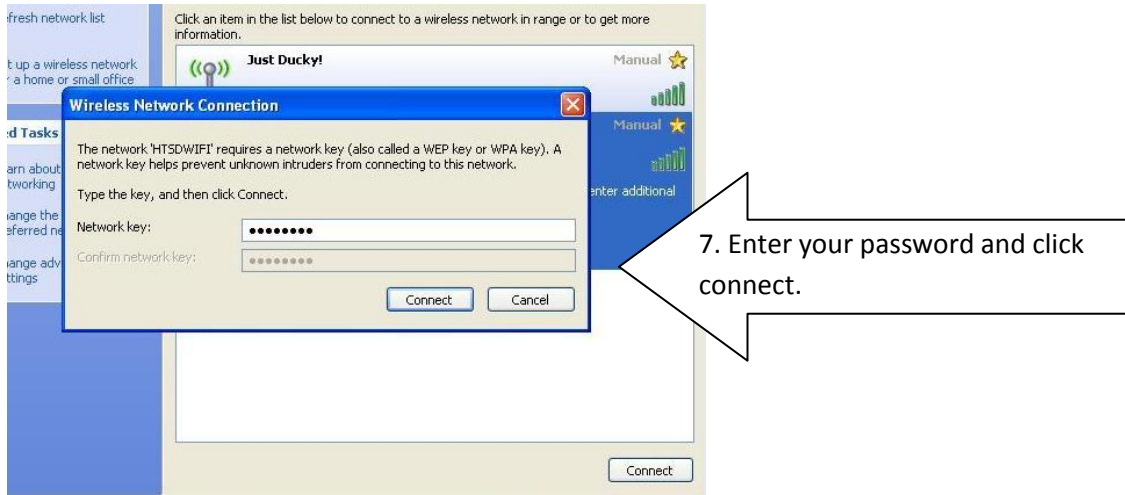


2. Enter your username and password and click OK.



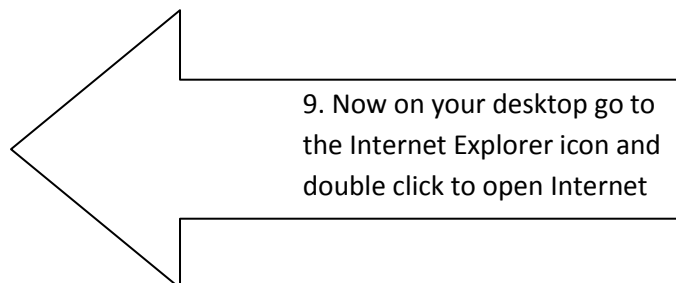


If you have a "password protected" wireless connection this window will popup.

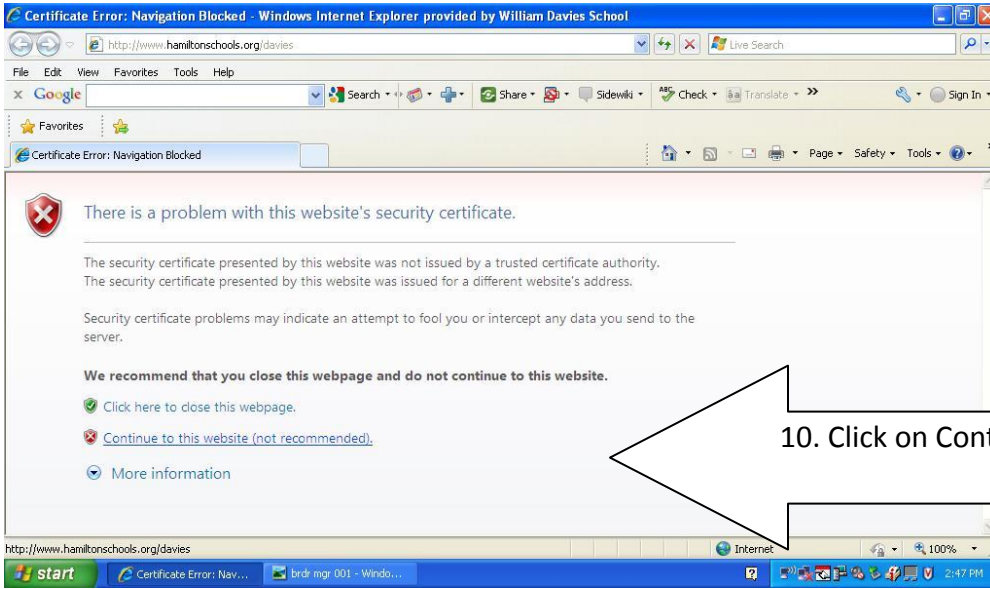


8. Once on the desktop, locate the "InterNet Settings (Home)" icon,

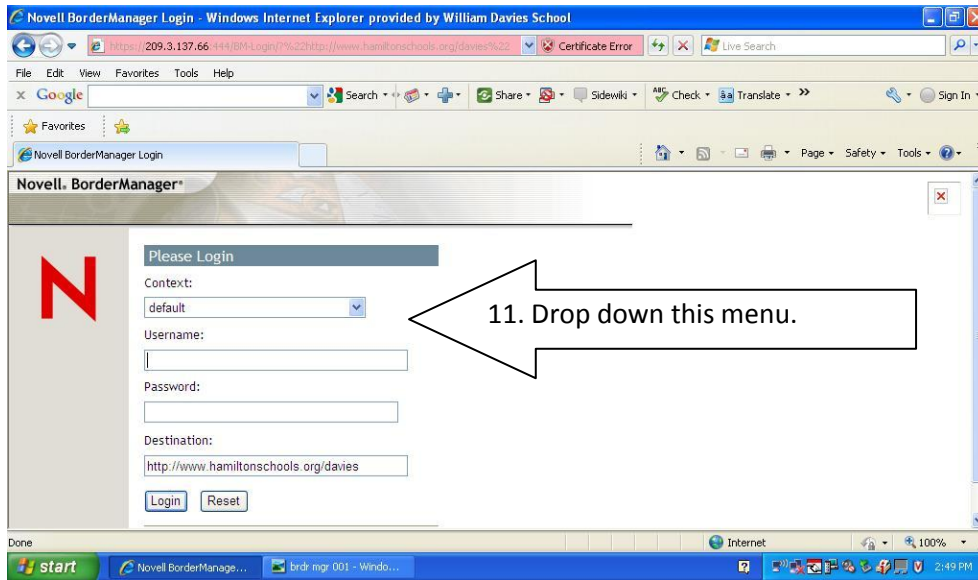
double click it, you will see a black window appear and disappear quickly.



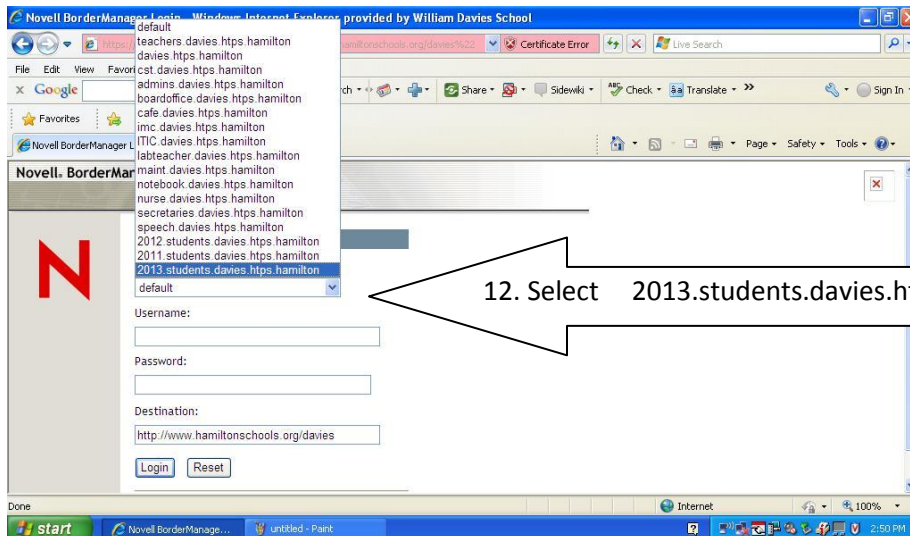
You may need to refresh once or twice before seeing this screen below.



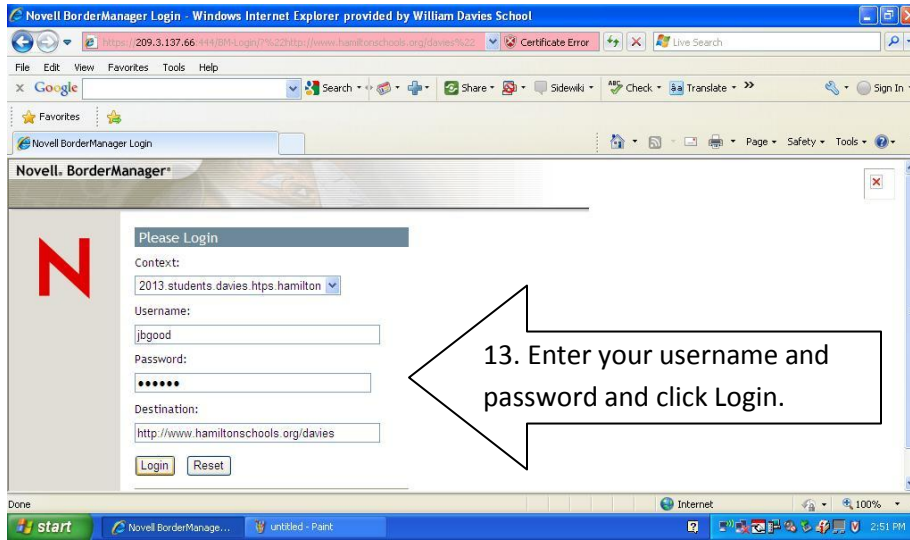
10. Click on Continue to this website.



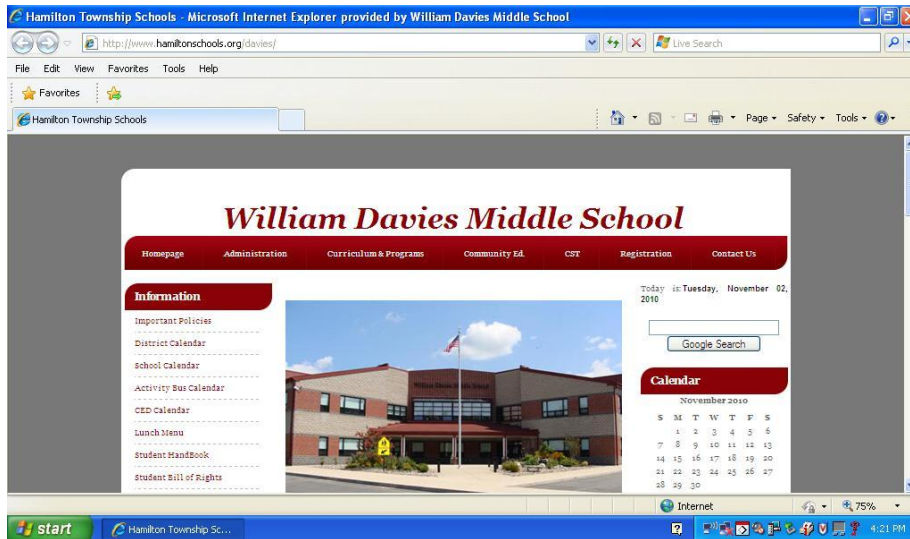
11. Drop down this menu.



12. Select 2013.students.davies.htps.hamilton



15. You should then come to the Hamilton Township Schools homepage....



16. **IMPORTANT** When you return to Davies remember to uncheck the "Workstation Only" box on the Novell log in screen before entering your *username* and *password*.